



NCASI

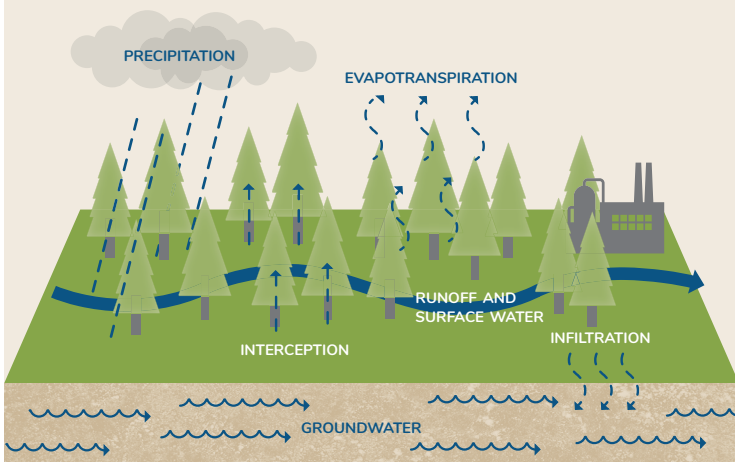
IMPACT. SCIENCE. SOLUTIONS.

Water Profile of the U.S. Forest Products Industry

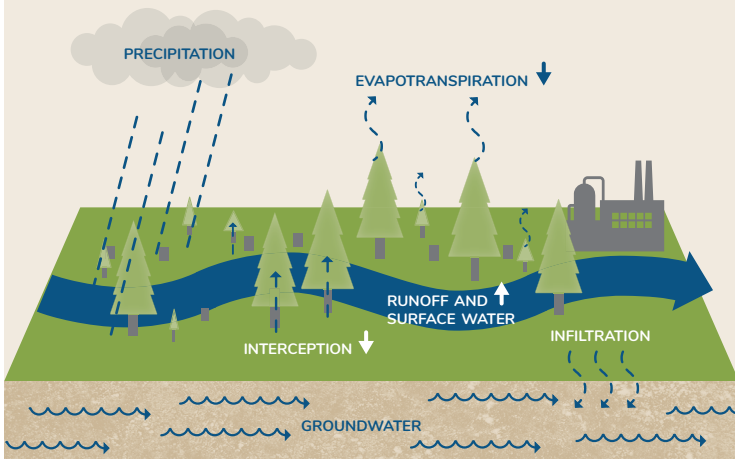
The forest products industry has important interactions with water resources. While the US industry uses a significant amount of water during the manufacture of pulp, paper and wood products, it treats and returns nearly 90% of that water to the environment. About 2/3 of the country's fresh water comes from forested watersheds, and the industry uses best management practices and forest regrowth to minimize effects on water availability and water quality.

FORESTRY

NATURAL FOREST WATER BALANCE



CHANGES TO FOREST WATER BALANCE IMMEDIATELY AFTER FOREST HARVEST



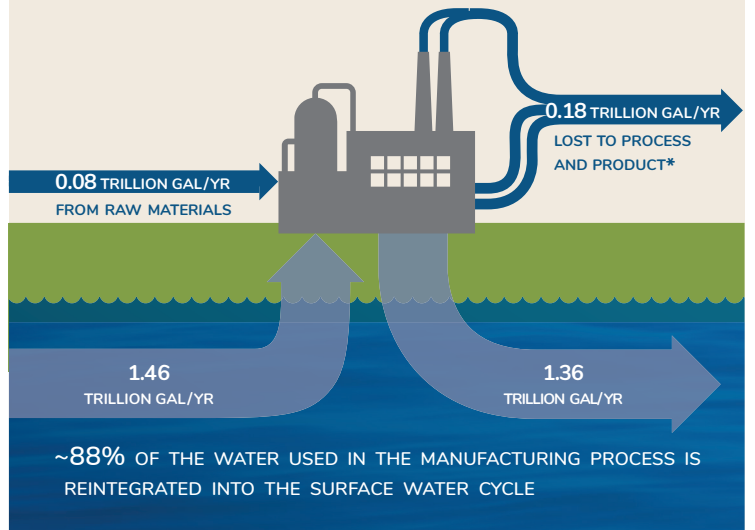
MAGNITUDE AND DURATION OF WATER BALANCE EFFECTS VARY SPATIALLY AND TEMPORARILY



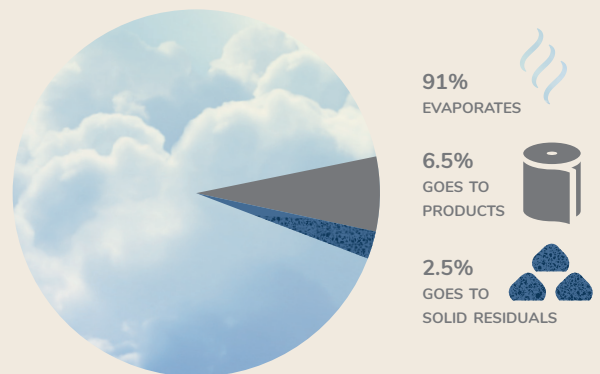
FOREST TYPE AND CLIMATE INFLUENCE THE WATER BALANCE. EFFECTS ARE MINIMIZED WHEN A) BEST MANAGEMENT PRACTICES ARE USED DURING HARVESTING; AND B) ONLY A SMALL PORTION OF THE LANDSCAPE IS HARVESTED ANNUALLY.

MANUFACTURING

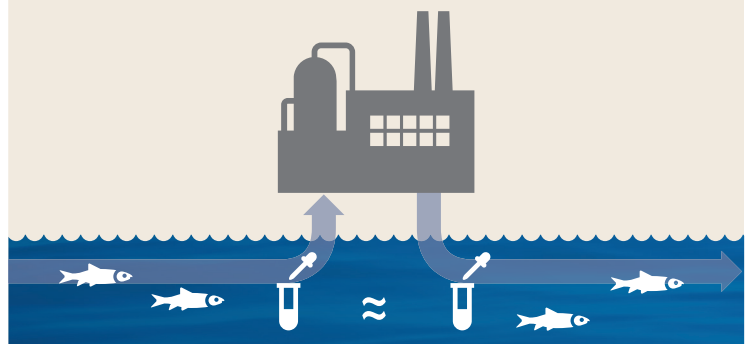
QUANTITIES OF WATER INVOLVED



*OF THE 0.18 TRILLION GAL/YR LOST TO PROCESS AND PRODUCT ...



QUALITY OF EFFLUENT



THE COMPATIBILITY OF EFFLUENTS WITH RECEIVING WATERS IS ADDRESSED BY STATE AND FEDERAL STANDARDS FOR EFFLUENT QUALITY AND THROUGH PROTECTION OF SPECIFIC WATERS RECEIVING TREATED EFFLUENT DISCHARGES.

INFORMATION TAKEN FROM:

NCASI. 2009. Water profile of the United States forest products industry. Technical Bulletin No.960. Research Triangle Park, NC: National Council for Air and Stream Improvement, Inc. ©NCASI 2018.